



Aboriginal Funeral Transport

About 'Sorry Business'

The Aboriginal Funeral Transport 'Sorry Business' initiative commenced on 1 December 2015 and provides transport assistance for Aboriginal communities to attend funerals within NSW.

It is intended to be a source of funding for Aboriginal communities that are isolated and disadvantaged to aid them in accessing transport where they would have otherwise had insufficient resources to do so.

How Transport for NSW can help you

Using existing public transport services:

Transport for NSW will cover 100 per cent of the cost for a return ticket for people using existing public transport services (e.g. NSW buses & trains) to travel to a funeral.

Private transport:

Transport for NSW will cover up to 50 per cent of the total costs associated with private transport (buses), which includes the cost of fuel. If available, volunteer drivers and/or buses are valuable in the application process and are taken into consideration.

Note: Private transport applications are generally only considered for groups of at least eight people that are travelling together in the same vehicle.

Chandler Macleod Managed Training Services (MTS)

In partnership with Transport for NSW, MTS acts as a service provider for Aboriginal communities to enquire and apply for funding for funeral transport.

They are available from 9am to 5pm weekdays on **1300 361 787**.

Application notes

- Have evidence of the funeral that the application is for ready to ensure that the application process is completed without delay.
- Upon approval of your application, this funding assistance cannot be provided to you more than twice per calendar year.

Contact information

For application assistance and bookings:

MTS: **1300 361 787**

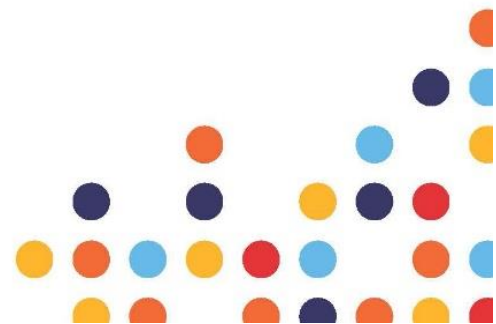
MTS Email: mts@chandlermacleod.com

For further information on transport and funding, contact the Aboriginal Service Development Officer NSW:

Nigel Robinson

Mobile: **0413 368 261**

Email: Nigel.Robinson@transport.nsw.gov.au



For original information source, go to:

https://www.transport.nsw.gov.au/operations/community-transport-operators/transport-for-aboriginal-communities#Aboriginal_Funeral_Transport_-_Sorry_Business

